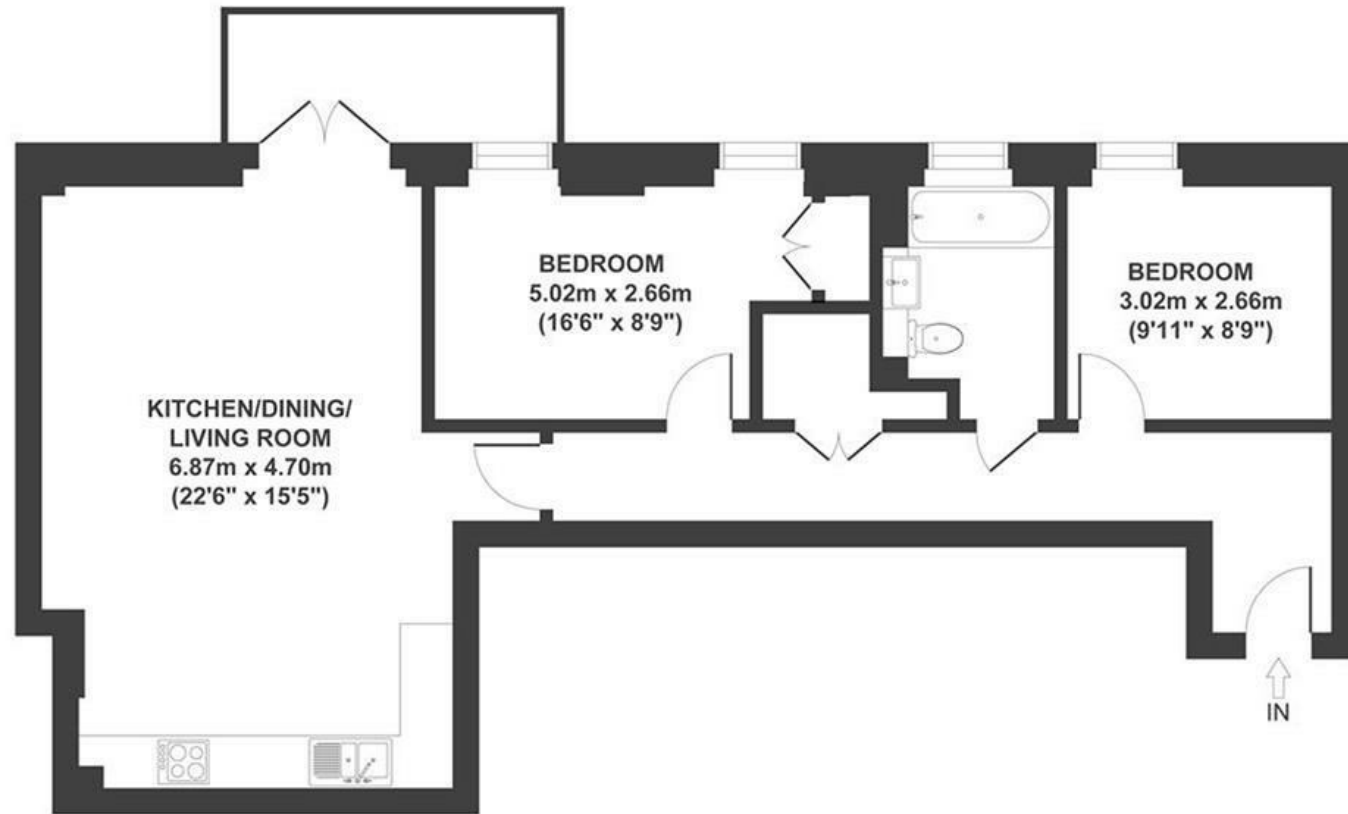


McArthur's Yard

HOTWELLS

APPROXIMATE FLOOR AREA
71 SQM / 764 SQFT



~~Boardwalk~~

McArthurs Yard

HARBOURSIDE, BRISTOL

£

£425,000

zzz

2 Bedrooms



BS1 6AN



1 Bathrooms

"It goes without saying: harbourside living is great. You're a short stroll from the best coffee and croissants (Mokoko & Little Victories) – and the harbour loop is ideal for an early-morning jog or getting your steps in after work. The flat itself super calm, peaceful and practical with a generous main living space that's made it really nice to both work from home and have people round. I've also enjoyed upgrading the apartment since moving in to make it feel that bit more considered."

